



**IPS**

# Right On Target



*John Ockenfels, President  
City Carton Recycling  
Iowa City, Iowa*

**Baled Material:**

- corrugated cardboard
- newspaper
- plastics

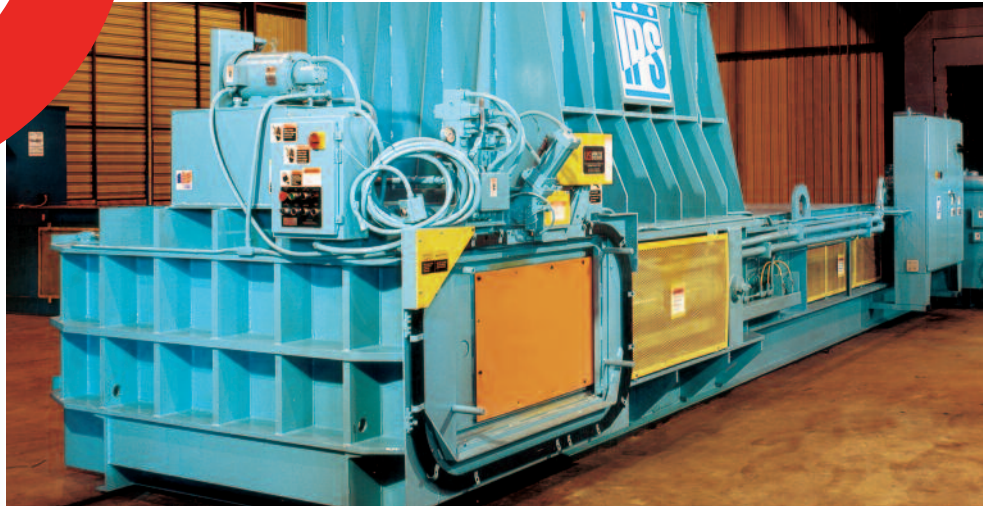
**Baled Volume:**

225,000 tons per year

**Material Sources:**

- industrial and community recycling programs
- manufacturing facilities
- printing companies
- curbside haulers

*“Downtime is production time you’ll never regain.”*



**City Carton Recycling** is Iowa’s largest full service paper Recycling Company, with seven locations, and one of the largest full-service recycling companies in the Midwest.

Rigorous production schedules require powerful balers.

**IPS is right on target.**

“The IPS 2-Ram Baler does a great job on plastics,” relays John Ockenfels, president of City Carton Recycling. “Plastics tend to push up and out of the baling chamber because they spring back, but the IPS precompression ram goes to work before the material begins to move forward so everything goes into chamber on every stroke.”

**IPS Balers, Mfg.**  
[www.ipsbalers.com](http://www.ipsbalers.com)  
(912) 366-9460 • (800) 280-2313

**And right on the money.**

“The unique design of the precompression ram causes the machine to rarely cut at the shear resulting in less stress,” he continues.

“Reducing shock and the subsequent jolt is a great benefit to an operation of our size. We have gone 23,000 hours on our first IPS Baler and 24,000 hours on another without stopping production to reline the balers. An average baler requires relining in half that amount of time. We won’t settle for average.”

*More even, squarer bales benefit the bottom line in our operation.*



## 2-RAM BALER SPECIFICATIONS

Model	TR-1052 50	TR-1052 100S	TR-1270 75	TR-1270 100S	TR-1288 100S	TR-1388 100S	TR-1388 200
-------	---------------	-----------------	---------------	-----------------	-----------------	-----------------	----------------

HYDRAULIC							
Main Cylinder	10" bore 254 mm	10" bore 254 mm	12" bore 305 mm	12" bore 305 mm	12" bore 305 mm	13" bore 330 mm	13" bore 330 mm
System Pressure	3200 PSI 220 bar	3200 PSI 220 bar	3200 PSI 220 bar	3200 PSI 220 bar	3200 PSI 220 bar	3200 PSI 220 bar	3200 PSI 220 bar
Total Force Metric Ton	251,300 LB 114 t	251,300 LB 114 t	361,900 LB 165 t	361,900 LB 165 t	361,800 LB 165 t	424,530 LB 193 t	424,530 LB 193 t
Ram Face Pressure	212 PSI 14.6 bar	212 PSI 14.6 bar	218 PSI 15 bar	218 PSI 15 bar	218 PSI 15 bar	253 PSI 17.4 bar	253 PSI 17.4 bar
Bale Door Cylinder	6" bore 152 mm	6" bore 152 mm	6" bore 152 mm	6" bore 152 mm	8" bore 203 mm	8" bore 203 mm	8" bore 203 mm
Ejector Cylinder	8" bore 203 mm	8" bore 203 mm	8" bore 203 mm	8" bore 203 mm	9" bore 229 mm	9" bore 229 mm	9" bore 229 mm
Pre-compression Lid Cylinder (Optional)	N/A	N/A	8" bore 203 mm	8" bore 203 mm	8" bore 203 mm	8" bore 203 mm	8" bore 203 mm
Strapper	U. S. Wire Tie Systems Model 331 Standard / Other Models Available						

ELECTRICAL							
Main Motor	50 HP 37 kW	100 HP 75 kW	75 HP 56 kW	100 HP 75 kW	100 HP 75 kW	100 HP 75 kW	200 HP** 150 kW
Strapper Pump Motor	10 HP 7.5 kW	10 HP 7.5 kW	10 HP 7.5 kW	10 HP 7.5 kW	10 HP 7.5 kW	10 HP 7.5 kW	10 HP 7.5 kW

STRUCTURAL							
Length Overall	30 ft 9.1 meter	30 ft 9.1 meter	32 ft 9.75 meter	32 ft 9.75 meter	36 ft 11 meter	36 ft 11 meter	36 ft 11 meter
Width Overall	16 ft 4.9 meter	16 ft 4.9 meter	21 ft 6.4 meter	21 ft 6.4 meter	21 ft 6.4 meter	21 ft 6.4 meter	21 ft 6.4 meter
Charge Hopper Height	90 in 2.3 meter	90 in 2.3 meter	90 in 2.3 meter	90 in 2.3 meter	90 in 2.3 meter	90 in 2.3 meter	90 in 2.3 meter
Hopper Opening	52 in W 80 in L 1320 mm W 2032 mm L	52 in W 80 in L 1320 mm W 2032 mm L	72 in W 80 in L 1829 mm W 2032 mm L	72 in W 80 in L 1829 mm W 2032 mm L	72 in W 96 in L 1829 mm W 2438 mm L	72 in W 96 in L 1829 mm W 2438 mm L	72 in W 96 in L 1829 mm W 2438 mm L

PERFORMANCE							
Bale Size Expanded	30 in (762 mm) High x 45 in (1143 mm) Wide x 64 in (1625 mm) Long						
Bale Weight *OCC	Up to 1400 LB 630 KG	Up to 1400 LB 630 KG	Up to 1400 LB 630 KG	Up to 1400 LB 630 KG	Up to 1400 LB 630 KG	Up to 1500 LB 680 KG	Up to 1500 LB 680 KG
Production Rate *OCC Metric Ton	Up to 7 TPH 6.3 t	Up to 14 TPH 12.6 t	Up to 8 TPH 7.2 t	Up to 18 TPH 16 t	Up to 19 TPH 17 t	Up to 17 TPH 15 t	Up to 24 TPH 22 t

### Standard Features:

- Programmable Controller with Phone Modem
- Large Charge Box Opening
- Export Bale Size and Density
- Oil Cooler and Oil Heater
- Bale Door / Relief System

### Available Options:

- Pre-compression Lid™
- Conveyor, Conveyor Controls
- Feed Hopper Extensions
- ASI System
- Smart Report
- Baling Wire

\* OCC Production rate based on 2.5 lbs. per cubic foot infeed density. Higher infeed density will result in higher TPH.

\*\*Two 100 HP motors

As part of our continuing product improvement and quality assurance programs, specifications are subject to change without notice and without incurring responsibility for units previously sold.



**IPS Balers Mfg, Inc.**

396 Frost Industrial Boulevard • P.O. Box 370 • Baxley, GA 31515  
Phone: (912) 366-9460 (800) 280-2313 Fax: (912) 366-9559  
[www.ipsbalers.com](http://www.ipsbalers.com)

